

# EndoSize<sup>®</sup>

Intelligent workflows for planning cases in minutes

Structural Heart Edition



## Your comprehensive solution for structural heart procedure planning

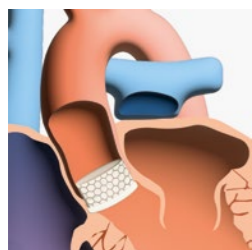
EndoSize® is an intuitive software that allows clinicians to fully plan the treatment strategies and placement of devices. It accurately measures the anatomy based on CT images, facilitates the development of an effective interventional strategy, suggests available prosthesis designs, and generates comprehensive preoperative planning reports. Practitioners control every part of the planning process, enabling them to select the best treatment approach.



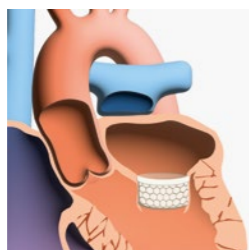
Algorithm based on artificial intelligence

- ✓ Dedicated workflow for each pathology
- ✓ Easy to learn with a user-friendly interface
- ✓ Fast, automated image processing
- ✓ PACS connectivity
- ✓ Streamlined step-by-step workflow
- ✓ The only planning tool on the market that is compatible with both PC and Mac

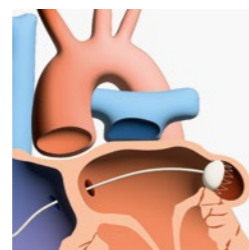
### Modules



TAVI

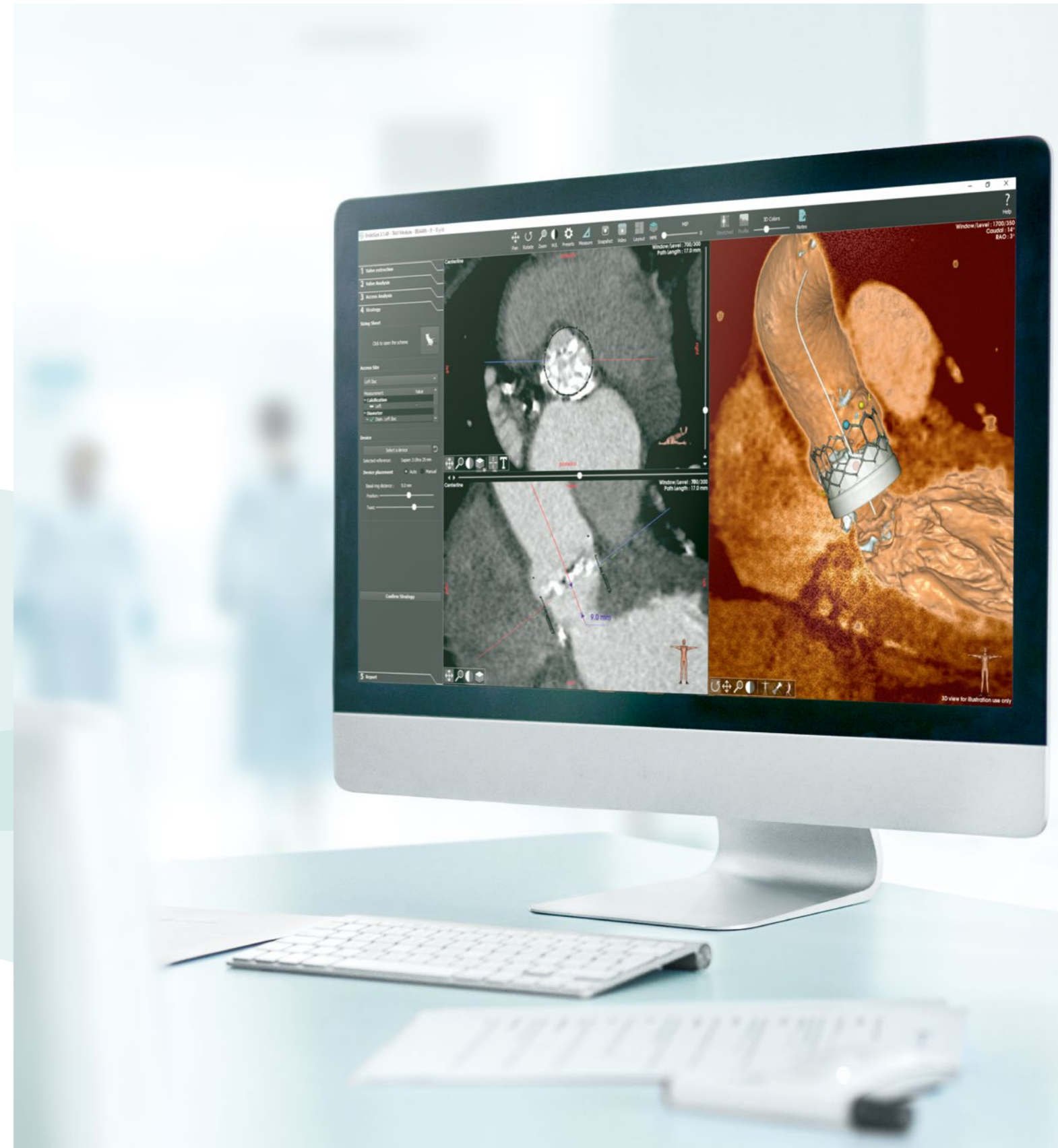


TMVR\*



LAAO\*

\*Use of module subject to prior local marketing authorization.

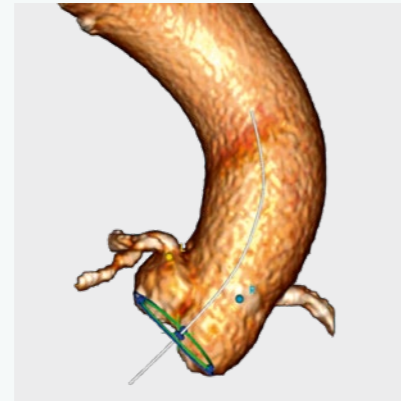






### Import your 3D data set with great flexibility

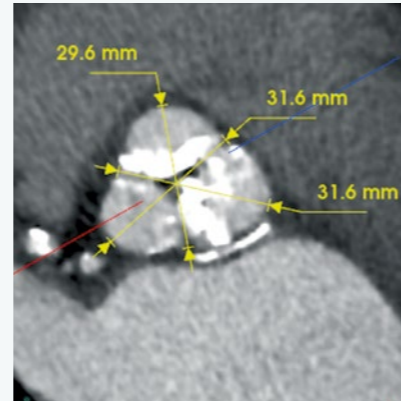
- Import CT datasets from the sources of your choice, such as PACS, medical cloud systems, file hosting services, hard disk drives or CD-ROMs
- Manage data in different databases in a user-friendly way through keywording in bookmarks and search results as feed text



### Get the 3D segmentation of the aortic valve with a single click

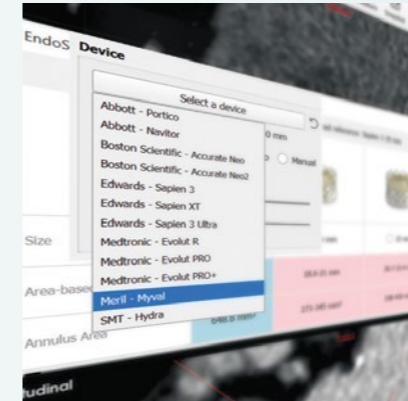
- Automatically obtain a segmentation of the volume of interest by a reliable AI-based algorithm
- Easily explore all anatomical structures of interest such as aortic cusps, coronaries, ascending aorta
- Calculate and display the centerline and valve plan as the basis for all relevant measurements

TAVI module



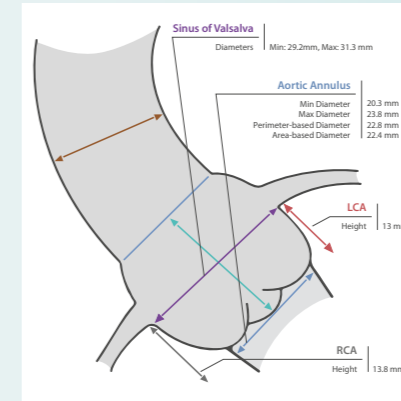
### Generate all relevant measurements via an automated process

- Get accurate measurements with ease such as diameter, distance, length
- Generate all relevant information related to the aortic annulus, sinus of Valsalva, coronaries height, ascending aorta and LVOT
- Adjust or add measurements manually if necessary – easy and fast to execute



### Choose the best strategy by selecting the appropriate device

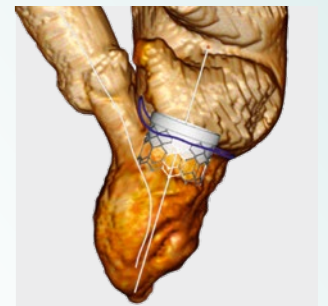
- Access to all main devices available on the market to choose from a uniquely comprehensive catalog containing all the detailed information and order references
- Get a suggestion of prosthesis sizes with suitable diameters and height based on the measurement results
- Set in advance the ideal positioning of the C-arm displaying simulated anatomy views to avoid parallax errors, unnecessary X-ray dose and contrast media and save time during the procedure



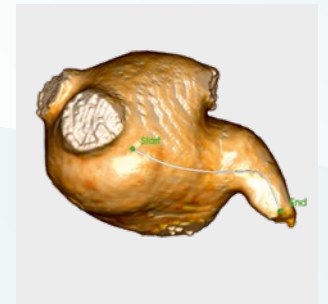
### Easily store and share your comprehensive planning

- Obtain a clear and customizable digital report summarizing all the information relevant for the intervention, such as measurements, choice of device, snapshots and videos
- Securely store your report using the PACS system, share it with colleagues via our innovative EndoSizeMe® app, or simply print it

Dedicated workflows available for various structural heart procedures



TMVR module\*



LAAO module\*

**International support team at your side:**

[contact@therenva.com](mailto:contact@therenva.com)

[www.therenva.com](http://www.therenva.com)

**Free trial version upon request.**



For Mac (OSX 10.15+)

For Windows (10/11, 64 bits)

Information provided by the EndoSize® software is not intended to support or replace any medical decisions with respect to the patient's medical care. The sole and exclusive responsibility for determining the accuracy, completeness or appropriateness of any diagnostics, clinical or medical information provided by EndoSize® resides solely with the healthcare provider.



EndoSize® is a registered trademark of Therenva SAS.

In the USA, the EndoSize® software obtained a substantial equivalence determination and FDA clearance through the CDRH premarket notification process (510(K)).

In Europe, the EndoSize® software is CE marked (class IIa), not eligible for reimbursement.

The information provided in the labelling and manual is intended for healthcare professionals only.

For the safe and successful operation and use of the device, always read the instructions.

ES\_SHE\_2310\_ENG Update 2023/11/06. Non-contractual document - © 2023 Therenva SAS. All rights reserved.